

## Using ION Setup to change Demand Settings on PME 5310

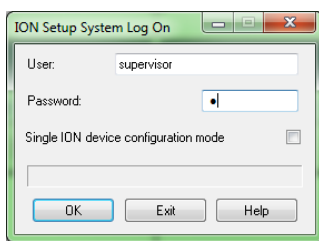
Customer want to know how he can change Demand Setup on PM5310 meter.

PM5000, any of them including those which have Ethernet card, are serial meters with under a TCP/IP access point.

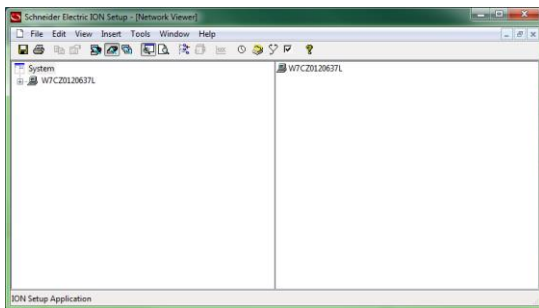
Customer should use an Ethernet gateway like EGX wire PM5310 serial meter under RS485 port of EGX and ION Setup in Network mode to do meter PM5310 setup.

If network access is solved follow bellow steps.

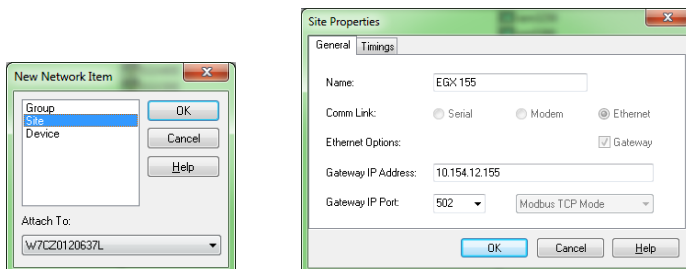
1. Start ION Setup in Network mode to create the communication link.



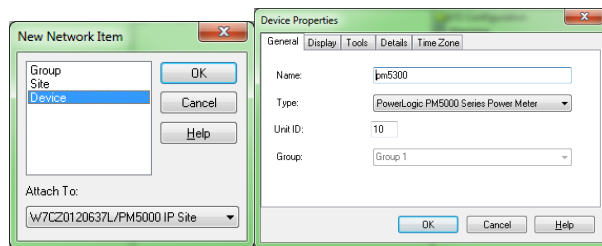
2. You have the PC site. You must create the Gateway site to acces the meter. If assume that use EGX300 add the site access point first and on that site add the meter itself.



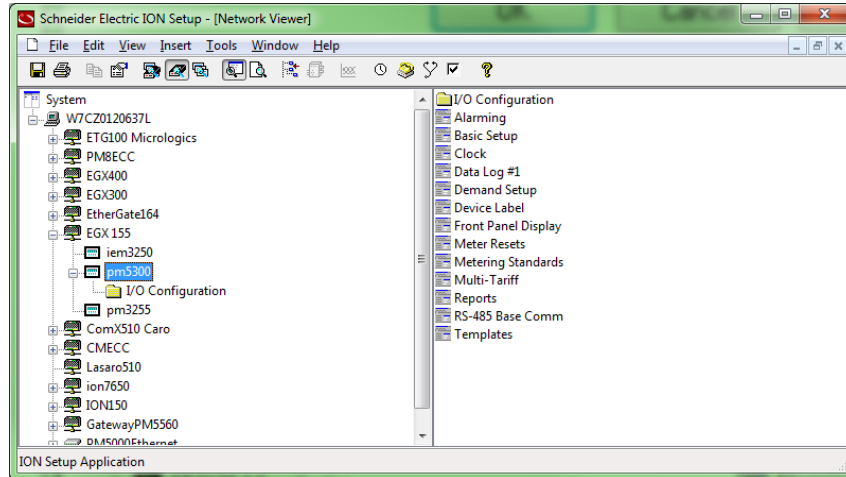
3. Right click on PC name and Insert and Item, select Site and Create the EGX IP site



4. Now you have the IP access point and need to add the Meter serial ID under IP site. Right click on EGX IP Site, select Inset item>Device and create the item PM5310. I don't have PM5310 but PM5330. The procedure and the way it works is the same.



5. You have now the PM meter on your ION Setup network



Since now user can edit all settings and can read meter data that are available to be read by ION Setup for this device.

### About Power and Demand on PM5310.

Mind that the PM5310 meter do not log Power but it do Power Demand calculation. This is say into document EAV15107 - EN04\_PM5300 - PowerLogic™ PM5300 series user guide Chapter 9—Measurements and calculations, page 79, Power demand calculation methods.

**Power** is calculated as real time value and updated at each 1 second.

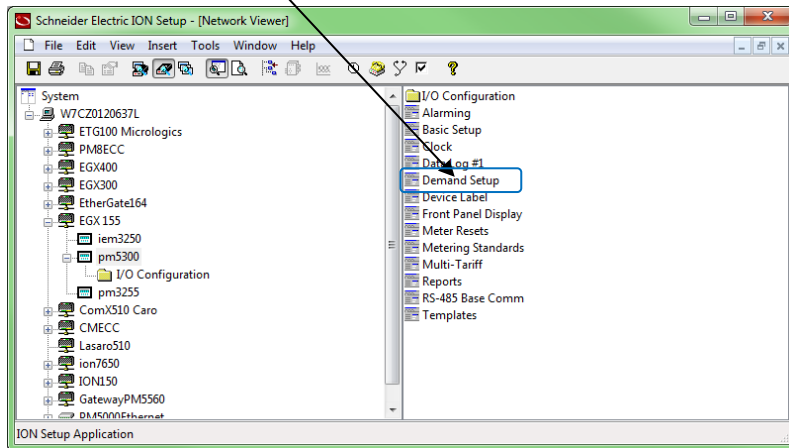
**As per User manual,**

**Power demand** is calculated by dividing the energy accumulated during a Period/Subinterval period by the length of that period. How the power meter performs this calculation depends on the method and time parameters that user is set (for example, timed rolling block demand with a 15-minute interval). To be compatible with electric utility billing practices, the power meter provides the following types of power demand calculations:

- Block interval demand
- Synchronized demand
- Thermal demand

User can configure the power demand calculation method from the front panel or using ION Setup.

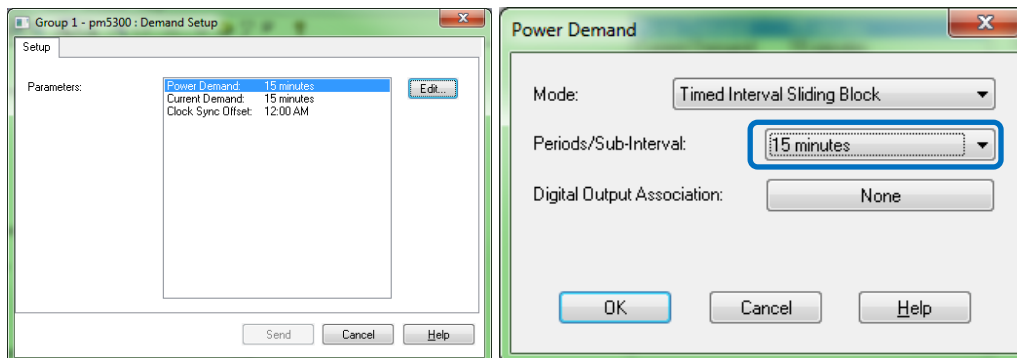
On ION Setup meter panel, Select Demand Setup and double click.



Read carefully the Chapter 9—Measurements and calculations – **Demand** , from manual – to learn about how meter is working to calculate Power Demand.

Mind that the meter should have a Synch offset of the clock. Default is set to 12:00 AM.

Open Demand setup select the item that you want to change and click Edit and do the change.



Default Mode for Demand Calculation is Time Interval Sliding Block with Subintervals of Time interval Block of 15 min. On User Manual at page 79-80 it is described what it means with a graphical example. Before do the change of interval time, you should understand how **Block interval demand** it works. The power meter displays the demand value for the last completed interval.